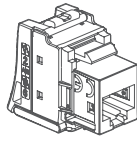
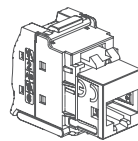


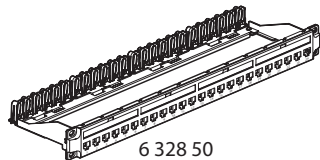
6 329 06/09/11 (UTP)



6 329 08 (FTP)



6 329 05/07/10 (STP)



6 328 50

CONTENTS

Page

1. GENERAL CHARACTERISTICS	1
2. POSITIONING	1
3. INSTALLATION	2
4. PANEL TECHNICAL CHARACTERISTICS	2
5. CONNECTOR TECHNICAL CHARACTERISTICS	2
6. DIMENSIONS	2
7. TYPICAL RJ45 CONNECTION.....	3
8. STANDARDS	3
9. PERFORMANCES	3

1. GENERAL CHARACTERISTICS

Panel system to be equipped with up to 24 Keystone RJ45 connectors.

- Keystone RJ45 connectors for toolless assembly (Cat 5e UTP/STP, Cat 6 UTP/FTP/STP, Cat 6_A UTP/STP).

- 19" panel - 1 U - Black (RAL 9017).

Universal mounting in all racks or cabinets with automatic earthing on unpainted uprights. Painted uprights can be connected to earth with a cord and a screw connection.

Locating pin for pre-positioning the panel.

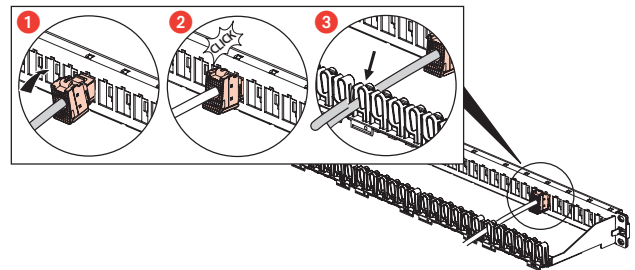
Equipped with rear cable guide to hold cable during maintenance

Supplied with sheet of labels for marking connectors.

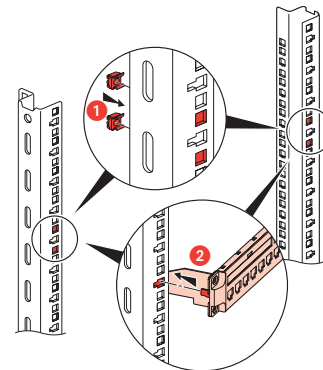
Each connector can be removed individually.

- Each RJ45 connector is suitable for flush-mounting and surface-mounting boxes of minimum depth of 40mm.

Connector mounting



Panel mounting

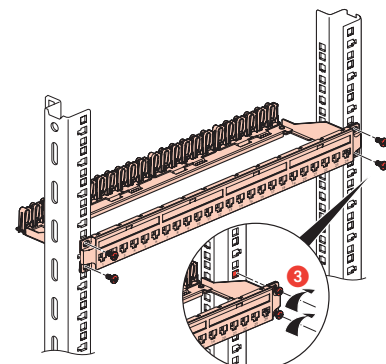


Ingenious: the system allows the panel to be pre-positioned and held in place without the need for screws.

Once inserted in the uprights, it holds firmly in place.

Now you can easily assemble the panels.

Screw each panel in place once everything is connected up correctly.



	Description	Cat.No	Weight (g)
	Panel to be equipped with up to 24 RJ45	6 328 50	536
	Set of 24 Cat 5e UTP RJ45 connectors	6 329 11	228
	Set of 24 Cat 5e STP RJ45 connectors	6 329 10	693
	Set of 24 Cat 6 UTP RJ45 connectors	6 329 09	228
	Set of 24 Cat 6 FTP RJ45 connectors	6 329 08	228
	Set of 24 Cat 6 STP RJ45 connectors	6 329 07	693
	Set of Cat 6 _A UTP RJ45 connectors	6 329 06	498
	Set of 24 Cat 6 _A STP RJ45 connectors	6 329 05	693

2. POSITIONING

Connectors are connected at the rear without a special tool.

- Connectors clip onto the panel individually

No need to fix with a cable tie: the cable stays in the cable guide on the panel.

3. INSTALLATION



For more details on the applicable distance limits, see the length assumptions in ISO/IEC 11801-2, ISO/IEC 11801-3 and ISO/IEC 11801-5

4. PANEL TECHNICAL CHARACTERISTICS

■ **4.1 Material characteristics**

- Galvanised sheet steel
- Steel (screw)
- ABS
- Polycarbonate

■ **4.2 Electrical characteristics**

Panel automatically earthed to the uprights via an unpainted contact area.

Earthing lug on the panel if an additional earth is needed.

■ **4.3 Mechanical characteristics**

Fixing to the uprights with M6 screws and 9.5x9.5 cage nuts (supplied).
IK03
IP20

■ **4.4 Climate characteristics**

Operating temperatures: -10°C to +60°C
Storage temperatures: -10°C to +70°C
Humidity: 5% to 85% (non-condensing)

5. CONNECTOR TECHNICAL CHARACTERISTICS

■ **5.1 Material characteristics**

- Contacts: Bronze, gold/nickel coating, minimum gold thickness 0.8 µm
- Nickel/bronze
- ABS
- Polycarbonate
- Shielding (STP version): ZAMAK metal alloy, copper/nickel coating

■ **5.2 Electrical characteristics**

Breakdown voltage: 1000 V
Contact resistance: 20 mΩ
Insulation resistance: 500 MΩ at 100 VDC
Compatible with "PoE" remote powering

■ **5.3 Mechanical characteristics**

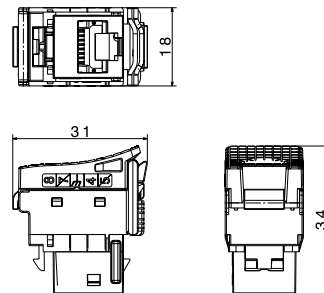
Maximum number of connections/disconnections operations: 5.
Endurance: 2500 operations (plug insertion/removal)
IK03
IP20

■ **5.4 Climate characteristics**

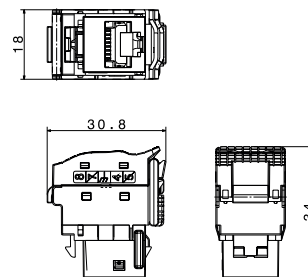
Operating temperatures: -10°C to +60°C
Storage temperatures: -10°C to +70°C
Humidity: 5% to 85% (non-condensing)

6. DIMENSIONS

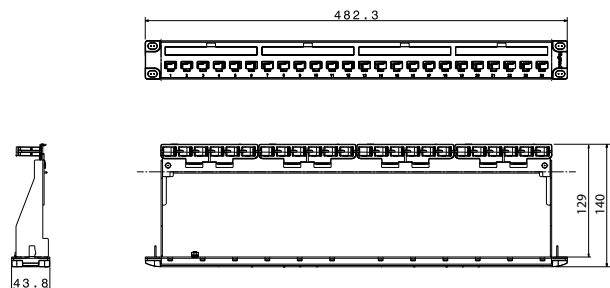
UTP-FTP connector dimensions



STP connector dimensions



Panel dimensions

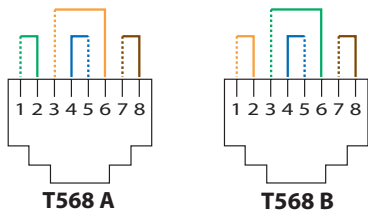


7. TYPICAL RJ45 CONNECTION

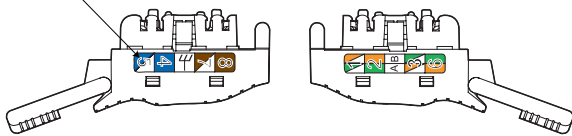
Takes the following plugs:
RJ11 (4 contacts), RJ12 (6 contacts), RJ45 (9 contacts).

T568 A and B dual colour code:

- UTP (8 contacts)
- FTP (9 contacts)
- STP (9 contacts)

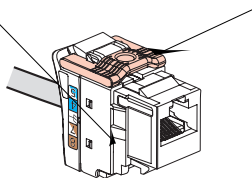


Colour code and contact number



Identification number

Colour code category:



Identification number

Category	Lock colour	UTP	FTP	STP
Cat 5e	White	LK01		LK03
Cat 6	Light Grey	LK51	LK52	LK53
Cat 6 _A	Charcoal grey	LK61		LK63

Permissible conductors:

- Solid/Stranded: 0.4 to 0.573 mm, AWG 26 to 23
- Polyethylene conductor insulation: Ø 0.85 to 1.7 mm on insulation

Number of wires to be connected per connection: 1

RJ45 connectors are equipped with a locking tab. They do not require a special tool and can be re-terminated if a mistake is made.

8. STANDARDS

- ISO/IEC 11801 series: International standard for generic cabling systems
- ANSI/TIA 568 series: North American standard for generic cabling systems
- EN 50173 series: European standard for generic cabling systems
- IEC 60603-7 series: International specification standard for plugs and bases

Connectors comply with the requirements of remote powering applications

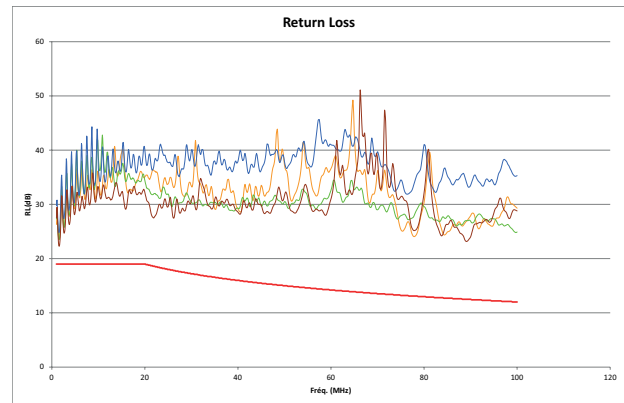
IEEE 802.3af, IEEE 802.3at, IEEE 802.3bt: "Power over Ethernet" Types 1 to 4, up to 90 W.

9. PERFORMANCES

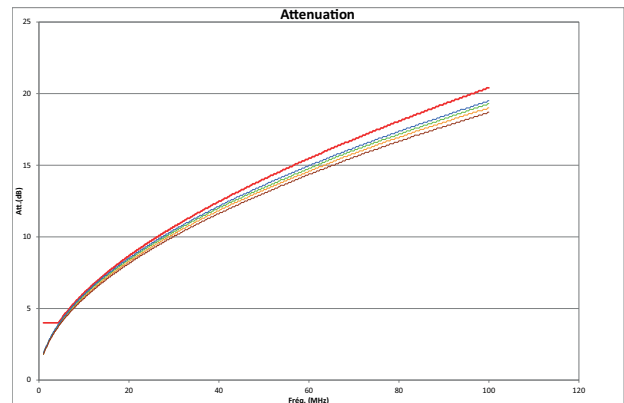
■ 9.1 Permanent link performances with Cat 5e UTP connector and Cat 5e U/UTP cable

The red line represents the limit line of standard.

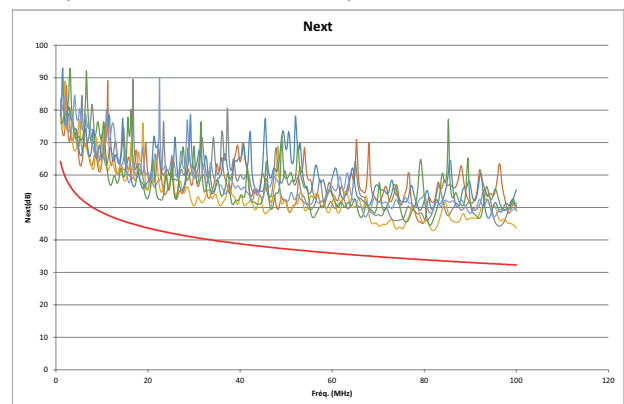
Return loss



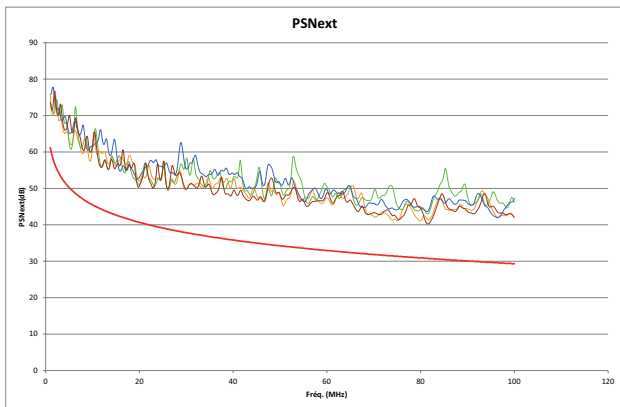
Attenuation



NEXT (Near end Crosstalk Attenuation)



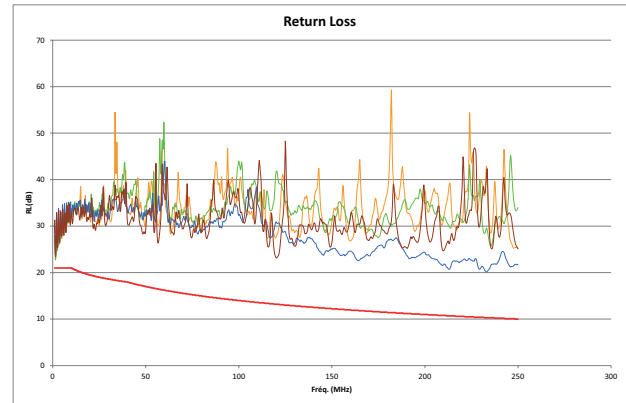
PS NEXT (Power Sum NEXT)



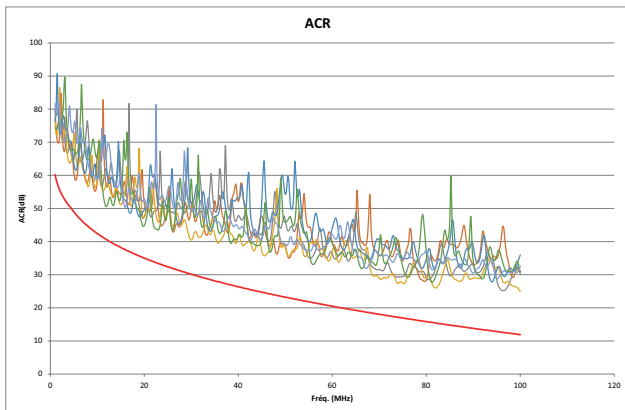
■ 9.2 Permanent link performances with Cat 6 UTP connector and Cat 6 U/UTP cable

The red line represents the limit line of standard.

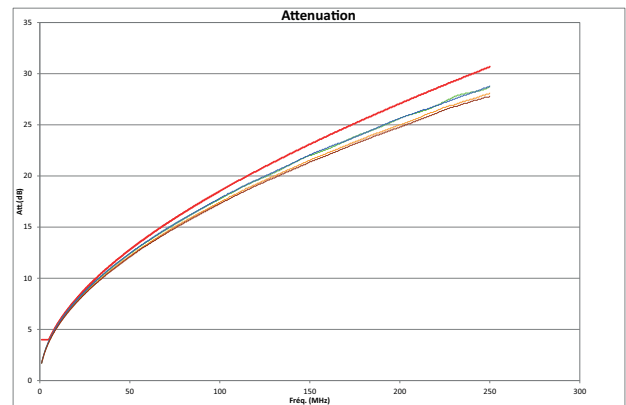
Return loss



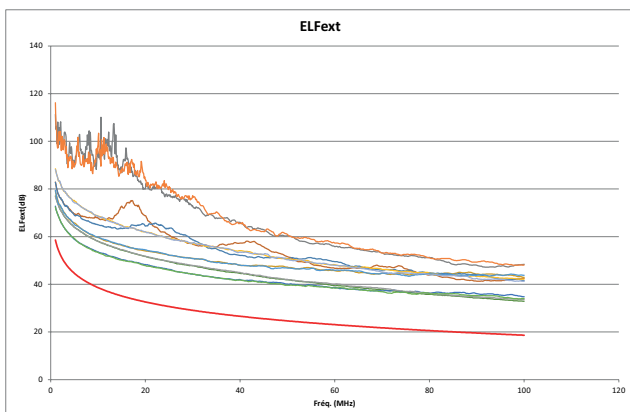
ACR -N



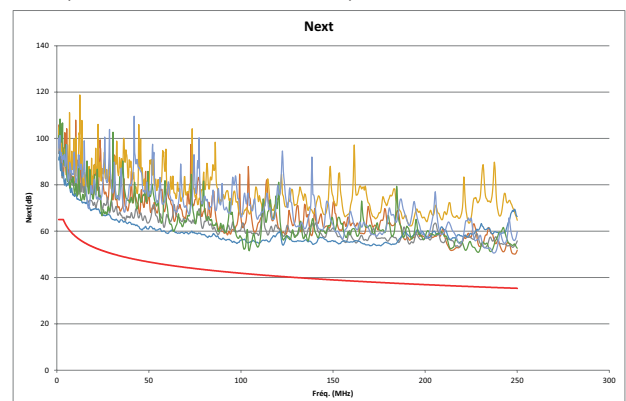
Attenuation



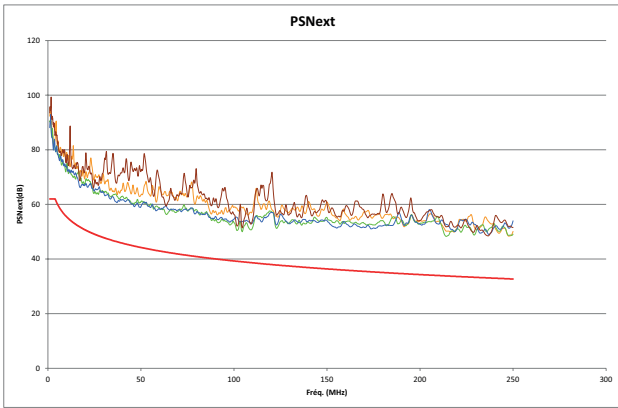
ACR-F



NEXT (Near end Crosstalk Attenuation)



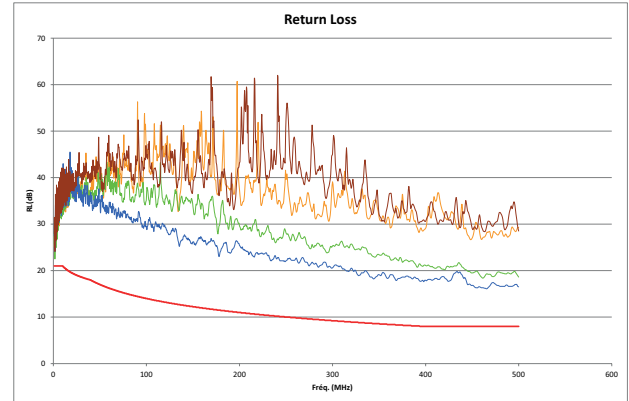
PS NEXT (Power Sum NEXT)



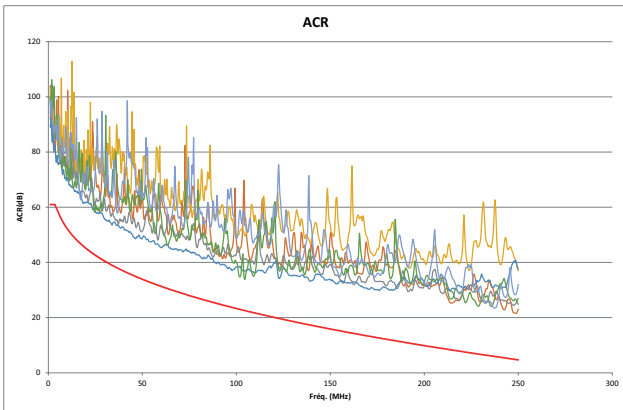
■ 9.3 Permanent link performances with Cat 6_A STP connector and Cat 6_A U/FTP cable

The red line represents the limit line of standard.

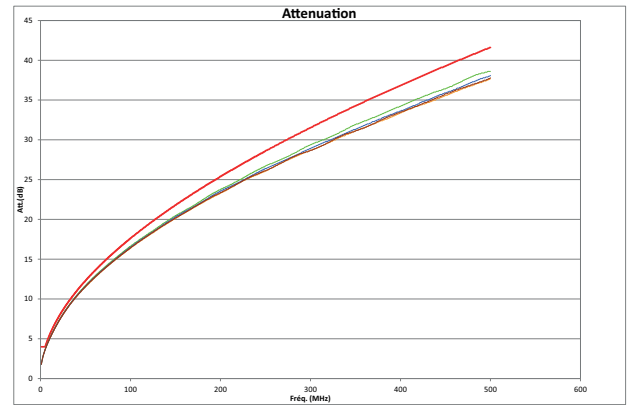
Return loss



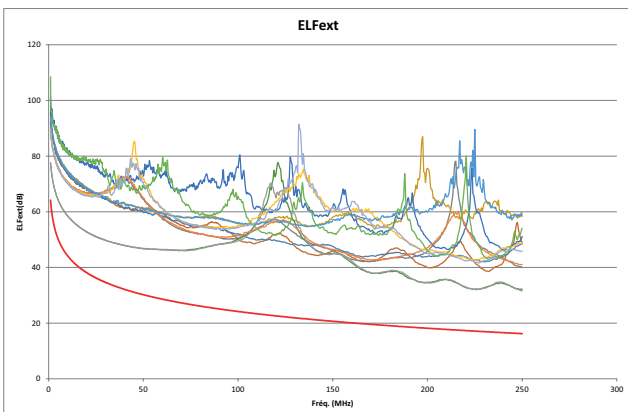
ACR-N



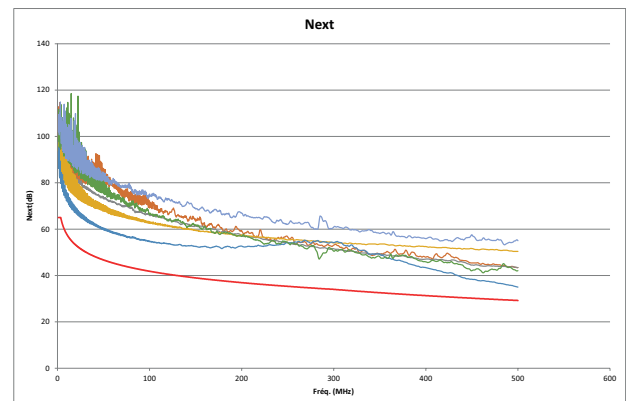
Attenuation



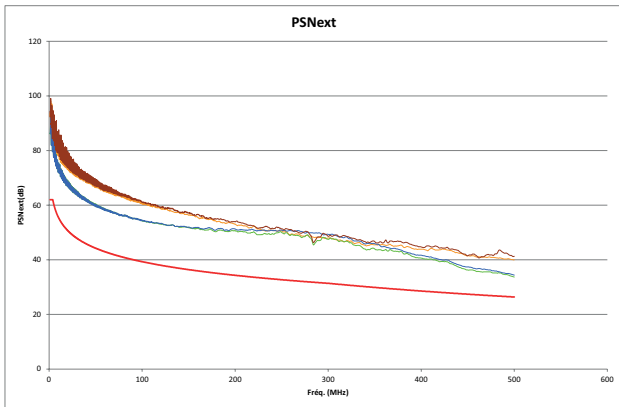
ACR-F



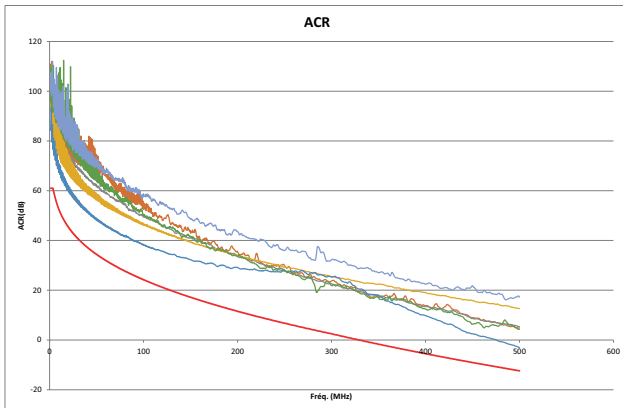
NEXT (Near end Crosstalk Attenuation)



PS NEXT (Power Sum NEXT)



ACR-N



ACR-F

